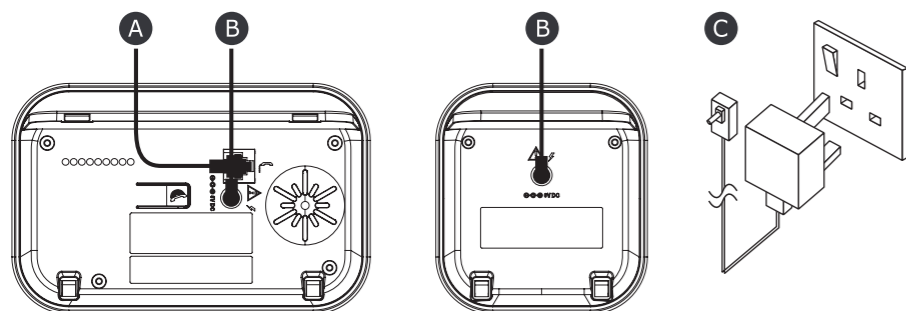


## FIRST INSTALLATION

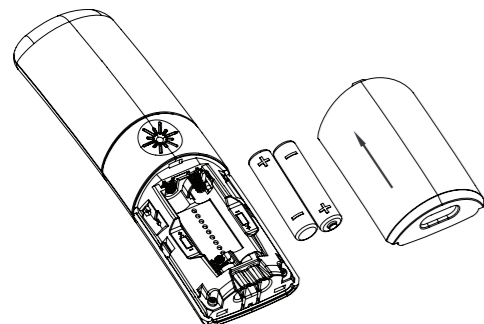
### 1 Connecting the Base

- Plug one end of the telephone line cord into the telephone jack on base bottom. (Fig. A)
- Plug the small end of power adapter into a power jack on base bottom. (Fig. B)
- Plug the large end of power adapter into a wall power outlet. (Fig. C)
- Plug the other end of the telephone line cord in to the telephone jack or micro-filter.
- Always use the cables provided in the box.
- For multiple pack version, plug the power adaptor of the charger into a wall power outlet.



### 2 Installing the handsets and Charging the Batteries

- Slide down to open the battery compartment cover.
  - Place the 2 supplied rechargeable batteries as indicated. Pay extra attention to direction of polarity.
  - Slide the battery compartment cover back.
  - Put the handset on the base or on the charger and charge for **15 hours** before using the handset for the first time. The handset will emit a beep when it is properly placed on the base or charger.
- Always use the rechargeable batteries provided in the box.**



#### Notes:

If you need to remove the batteries, slide open the battery compartment cover and using the finger hole, grip the batteries and gently pull them out.

### 3 Using your phone

- To customize handset (name, melody, language): press **OK** then press **CALLS** or **SETTINGS** then press **OK**.

Table 1.

- Menu** / **CALLS** or **SETTINGS** / **OK**

EN	DE	FR	IT	ES	PT	NL
HS SETTINGS	MT-EINSTEL.	REGL. COMB	IMPOSTA PORT	CONF. TELEF.	CONFIG. TERM	HANDSET INST

- CALLS** or **SETTINGS** / **LANGUAGE** / **CALLS** or **SETTINGS** / **OK**

EN	DE	FR	IT	ES	PT	NL
LANGUAGE	SPRACHE	LANGUE	LINGUA	IDIOMA	IDIOMA	TAAL

- To change PIN, registration handset, reset: press **CALLS** or **SETTINGS** then press **OK**.

## ? Troubleshooting

If you have difficulty with your phone, please try the suggestions listed below. As a general rule, if a problem occurs, remove the batteries from all the handsets in your installation for about 1 minute, then disconnect and reconnect the power supply to the base and reinstall the handset batteries.

Problem	Cause	Solutions
No dialing tone when pressing <b>CALLS</b> key.	<ol style="list-style-type: none"> <li>The connection cord of the base station is not plugged in.</li> <li>The adapter cord is not plugged in correctly in the base station.</li> <li>The line is busy, as another handset is used.</li> <li>Wrong connection cord.</li> </ol>	<ol style="list-style-type: none"> <li>Check the connections. Unplug and plug back in the mains. Check that the telephone line cord has been plugged into the base station and the phone socket.</li> <li>Check the base station plug and the AC plug (remove and plug-in).</li> <li>Wait until the line is unoccupied.</li> <li>Use the original connection cord.</li> </ol>
"No Link to base" is displayed.	<ol style="list-style-type: none"> <li>Base station out of range.</li> <li>Base station is not connected to mains.</li> </ol>	<ol style="list-style-type: none"> <li>Reduce the range.</li> <li>Connect base station to mains.</li> </ol>
The call does not work.	Service not activated or wrong operator.	Check your Subscription with network.
No display.	Empty batteries.	Recharge batteries.

## Technical Details

Field Range	Up to 300 meters*
Indoor Range	Up to 50 meters*
Handset Battery Autonomy (average values)	18 hours talk time** 300 hours standby**
Number of Handsets	Up to 4
Electrical Connection/ Base Mains Adaptor/ Charger	Base main adaptor & Charger adaptor: Model No.: AT-536B-060045B or A318-060045W-UK1 Input: 100-240 V/50-60 Hz/0.15 A Output: 6V DC/450 mA, 2.7W Only use the adaptors supplied with telephone. Single-phase AC, excluding IT install defined by the EN62368-1 standard. Caution: The network voltage is classified as hazard by the criteria of this standard.
Telephone Connection	Appliance designed for connection to a TNV3 class (telecommunications network voltage) analogue telephone line as defined by the EN62368-1 standard.
Batteries per handset	2pcs of AAA NiMH batteries - 2.4 V - 750mAh Only use the batteries supplied with the telephone. Use any other type of battery presents a risk of explosion. Used batteries must be disposed of in compliance with current environmental protection regulations.
Operating Temperature	From 5°C to 40°C

\* Values may vary according to environment.

\*\* Depending on initial battery charge.

**ATLINKS Europe**  
28 Boulevard Belle Rive  
92500 RUEIL-MALMAISON - France  
RCS Nanterre 508 823 747

ATLINKS UK Ltd  
3rd Floor, Waverley House  
7-12 Noel Street, London, W1F 8GQ - UK  
Company registration: 13809295

www.alcatel-home.com  
Alcatel is a trademark of Nokia, used under license by ATLINKS

F890 Voice UK  
A/W no.: 10002668 Rev.1 (EN)  
Made in PRC

# Alcatel

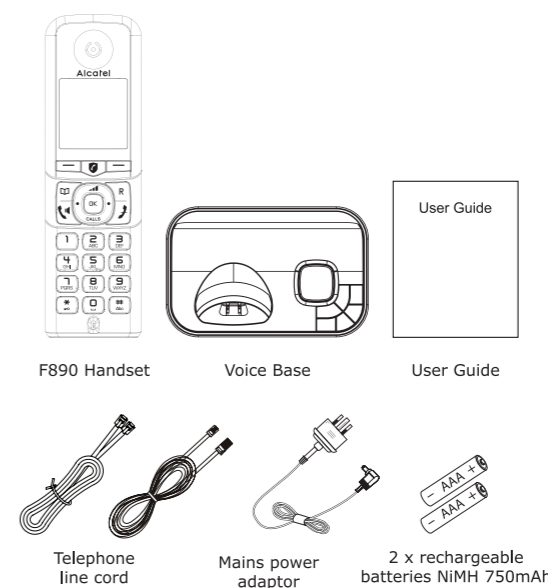
F890 VOICE/  
F890 VOICE DUO/  
F890 VOICE TRIO/  
F890 VOICE QUAD

## User Guide

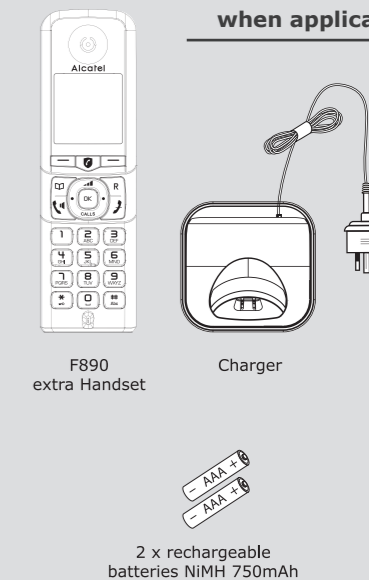
www.alcatel-home.com



## Box Content



### Additional items when applicable



## i General Information

### TROUBLESHOOTING

As a general rule, if a problem occurs, remove the batteries from all handsets for about 1 minute, then disconnect and reconnect the power supply to the base and re-install the handset batteries. For more information, you can download full user guide or get on-line assistance. Visit our website: www.alcatel-home.com

### SAFETY

This telephone is not designed for Emergency calls when the main power fails. Do not use your telephone to notify a gas leak or other potential explosion hazard. Do not open your device or its power supply to avoid risk of electrical shock. Do not attempt to open the batteries, as they contain hazardous chemical substances. Your telephone must be located in a dry place away from hot, humid and direct sunlight condition. To avoid radio signal interference, place the phone at least 1 meter away from other electrical appliances or other phones.

### ENVIRONMENT

This symbol means that your inoperative electronic appliance must be collected separately and not mixed with the household waste. The European Union has implemented a specific collection and recycling system for which producers are responsible. **Help us protect the environment in which we live!**

### CONFORMITY

Hereby, ATLINKS EUROPE declares that the radio equipment type DECT is in compliance with Legislation: Radio Equipment Regulations 2017 (SI 2017/1206). The full text of the UKCA and EU declaration of conformity is available at the following internet address: www.alcatel-home.com



Average power per channel: 10mW  
Maximum Output Power (NTP): 24dBm  
Frequency Range: 1880-1900MHz

